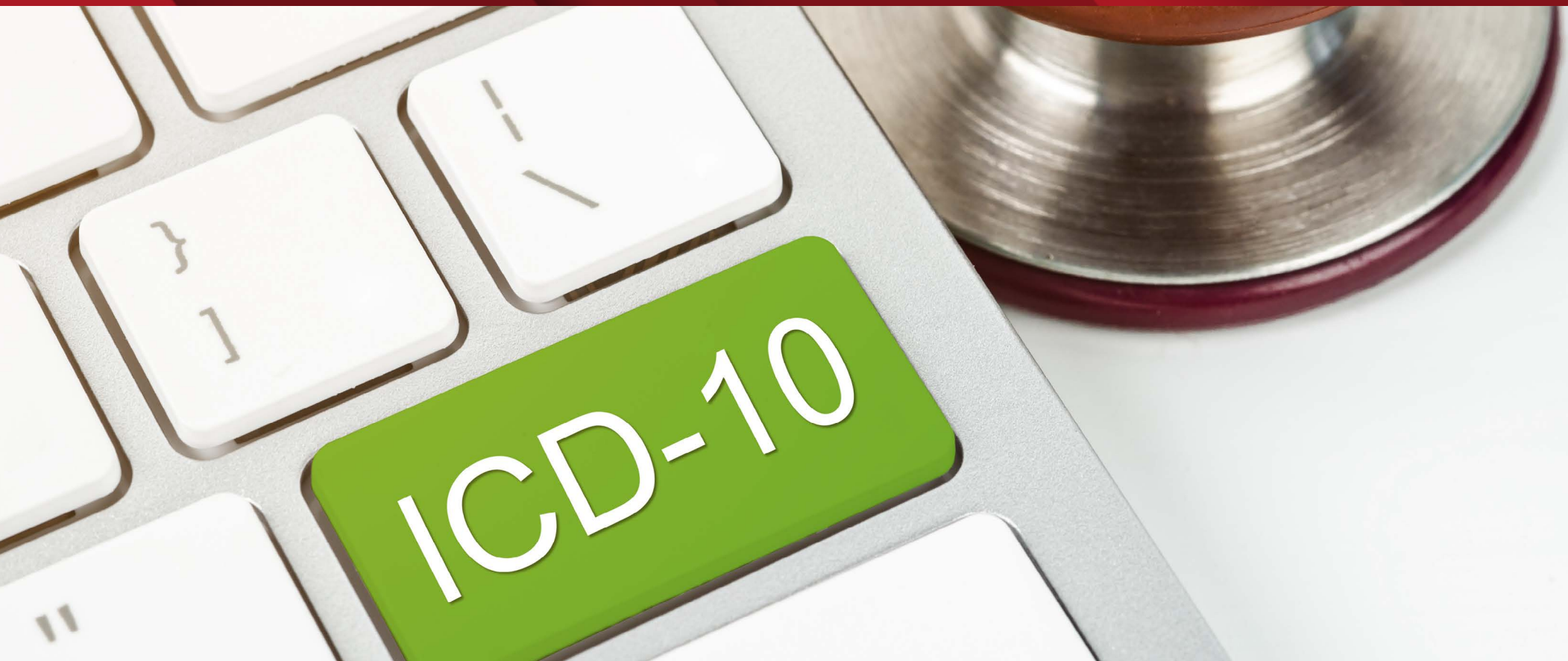


# CMS-HCC/ICD-10 Coder Reference Guide, 2021



This resource guide is based on the HCCs most frequently used within the Nebraska Health Network. It is not intended to be a comprehensive list of all HCCs/ICD-10s.

NEBRASKA  
HEALTH  
NETWORK



# Table of Contents

1	The Basics of Medical Risk Adjustment
2	Hierarchical Condition Categories (HCCs) - What are they?
3-6	CMS-HCC Descriptions and Risk Adjustment Factors
7	How to use the Coder Reference Guide
8-9	Infectious and Parasitic Diseases
10-12	Neoplasms
13	Hematologic and Immunologic
14-16	Endocrine, Nutrition and Metabolic
17-19	Mental, Behavioral and Neurodevelopmental
20-24	Nervous System
25	Eye and Adnexa
26-29	Circulatory System
30-31	Respiratory System
32-33	Digestive System
34-36	Skin and Subcutaneous Tissue
37	Musculoskeletal System and Connective Tissue
38	Genitourinary System
39-40	Injury, Poisoning and Certain Other Consequences of External Causes
41-42	Factors Influencing Health Status
43	Tips for Educating Providers
44	M-E-A-T Overview
45-49	HCC54 Extender

## CMS-HCC/ICD-10 Crosswalk

# The Basics of Medical Risk Adjustment

Health-care providers are undergoing a massive shift in how health care is delivered—and how it’s paid for. It’s a move from fee-for-service, or **volume care**—where the more you do, the more you get paid—to **value-based care**—where physicians are rewarded for providing high-quality, efficient care. Many factors drive success in value-based care, but one of the most crucial is **Medical Risk Adjustment**.



## What is Medical Risk Adjustment?

Medical Risk Adjustment (MRA) is an actuarial tool used to predict health-care costs of a population. Patient demographics, along with health conditions and disease burden, as indicated by ICD-10 diagnosis codes, are utilized to calculate a patient risk score.

## Why is MRA Important?

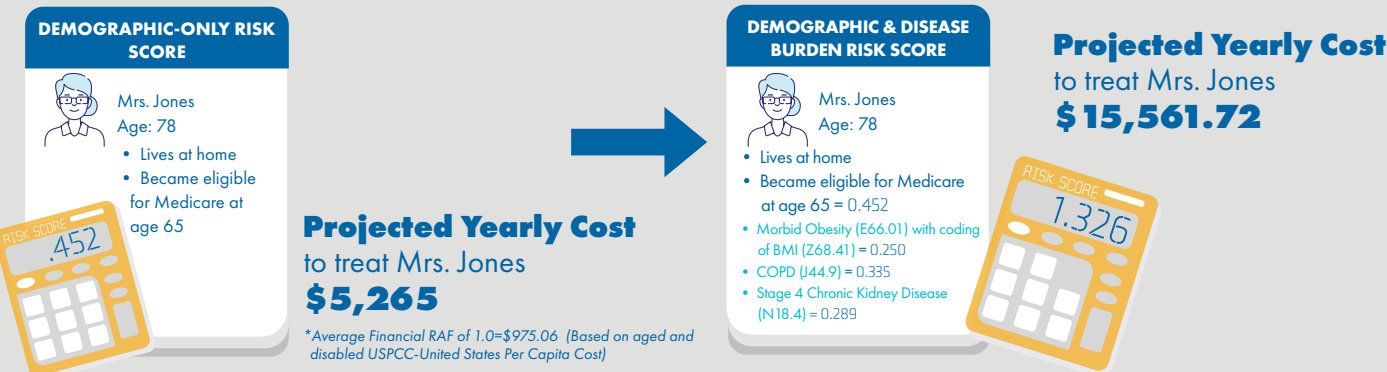
MRA assists all health insurance payers – including Medicare – understand how sick your patients really are, as indicated by their risk scores. MRA is used in value-based models such as CMS-HCC, HHS-HCC and CDPS, to ensure that cost targets are adjusted to align with the illness burden of the population. **This means providers are not penalized for taking care of sicker patients.**

## How Do I Optimize Risk Capture?

Document and code for all diagnoses for each patient, every year. Keep in mind that a patient with diabetes this year is considered to no longer have diabetes in subsequent years if it is not documented and coded **every calendar year**.

## How does MRA work?

The combination of demographic characteristics plus disease burden determines a patient’s “risk score.” The sicker the patient, the higher the risk score—and the higher the projected cost to treat that patient. Here’s an example of how MRA works:



In value-based care, not having the cost targets accurately reflect the risk of your patients:

- Decreases the ability to fund programs and resources to support population health initiatives
- Impacts your ability to meet cost targets, and
- Reduces the likelihood of earning payment incentives

## MRA - Not Just for Medicare Patients

Commercial Insurers, as well as Medicare and Medicaid plans, utilize risk adjustment methodologies to set cost targets for value-based care contracts.

# Hierarchical Condition Categories (HCC)

## What are they?

HCC is a risk adjustment model developed by CMS to calculate risk scores based on demographic information and a profile of major medical conditions to predict Medicare expenditures in the next year. The model maps a diagnosis into categories of clinically related medical conditions with similar cost patterns. It also incorporates disease hierarchies, whereby a person is coded only for the most severe manifestation among related conditions (hence, the name hierarchical condition categories). For unrelated diseases, however, HCCs accumulate.

**+72,600**

Total ICD-10 Codes

**+9,800**

ICD-10s in  
Risk Adjustment

**+85**

HCCs

# CMS-HCCs:

## Descriptions and Risk Adjustment Factors

HCC Number	HCC Description	RAF Score	Category Grouping	Page
1	HIV/AIDS	0.335	Infectious and Parasitic Diseases	8
2	Septicemia, Sepsis, Systemic Inflammatory Response Syndrome/Shock	0.352	Infectious and Parasitic Diseases	8
6	Opportunistic Infections	0.424	Infectious and Parasitic Diseases	8-9
8	Metastatic Cancer and Acute Leukemia	2.659	Neoplasms	10
9	Lung and Other Severe Cancers	1.024	Neoplasms	10-11
10	Lymphoma and Other Cancers	0.675	Neoplasms	11
11	Colorectal, Bladder and Other Cancers	0.307	Neoplasms	11-12
12	Breast, Prostate, and Other Cancers and Tumors	0.150	Neoplasms	12
17	Diabetes with Acute Complications	0.302	Endocrine, Nutritional and Metabolic	14
18	Diabetes with Chronic Complications	0.302	Endocrine, Nutritional and Metabolic	14-15
19	Diabetes without Complication	0.105	Endocrine, Nutritional and Metabolic	15
21	Protein-Calorie Malnutrition	0.455	Endocrine, Nutritional and Metabolic	15
22	Morbid Obesity	0.250	Endocrine, Nutritional and Metabolic	15
23	Other Significant Endocrine and Metabolic Disorders	0.194	Endocrine, Nutritional and Metabolic	16
27	End-Stage Liver Disease	0.882	Digestive System	32
28	Cirrhosis of Liver	0.363	Digestive System	32
29	Chronic Hepatitis	0.147	Digestive System	32
33	Intestinal Obstruction/Perforation	0.219	Digestive System	32-33
34	Chronic Pancreatitis	0.287	Digestive System	33
35	Inflammatory Bowel Disease	0.308	Digestive System	33
39	Bone/Joint/Muscle Infections/Necrosis	0.401	Musculoskeletal System and Connective Tissue	37
40	Rheumatoid Arthritis and Inflammatory Connective Tissue Disease	0.421	Musculoskeletal System and Connective Tissue	37
46	Severe Hematological Disorders	1.372	Hematologic and Immunologic	13

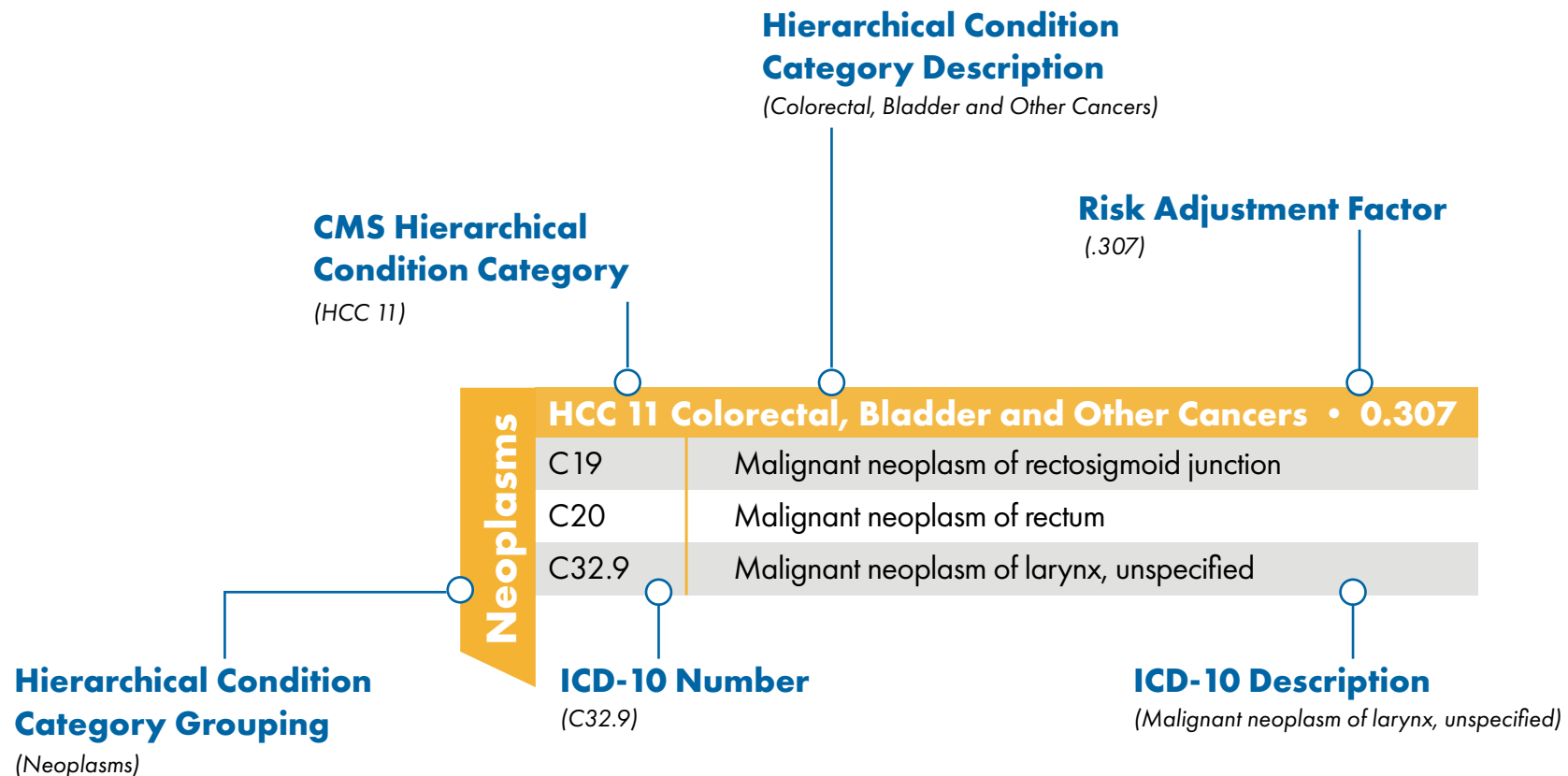
HCC Number	HCC Description	RAF Score	Category Grouping	Page
47	Disorders of immunity	0.665	Hematologic and Immunologic	13
48	Coagulation Defects and Other Specified Hematological Disorders	0.192	Hematologic and Immunologic	13
51	Dementia with complications	0.346	Nervous System	20
52	Dementia without complications	0.346	Nervous System	20
54	Substance Use with Psychotic Complications	0.329	Mental, Behavioral and Neurodevelopmental	17
55	Substance Use Disorder, Moderate/Severe, or Substance Use with Complications	0.329	Mental, Behavioral and Neurodevelopmental	17-18
56	Substance Use Disorder, Mild, Except Alcohol and Cannabis	0.329	Mental, Behavioral and Neurodevelopmental	17-18
57	Schizophrenia	0.524	Mental, Behavioral and Neurodevelopmental	18
58	Reactive and Unspecified Psychosis	0.393	Mental, Behavioral and Neurodevelopmental	18
59	Major Depressive, Bipolar, and Paranoid Disorders	0.309	Mental, Behavioral and Neurodevelopmental	18-19
60	Personality Disorders	0.309	Mental, Behavioral and Neurodevelopmental	19
70	Quadriplegia	1.242	Nervous System	20
71	Paraplegia	1.068	Nervous System	20
72	Spinal Cord Disorders/Injuries	0.481	Nervous System	21
73	Amyotrophic Lateral Sclerosis and Other Motor Neuron Disease	0.999	Nervous System	21
74	Cerebral Palsy	0.339	Nervous System	21
75	Myasthenia Gravis/Myoneural Disorders and Guillain-Barre Syndrome/Inflammatory and Toxic Neuropathy	0.472	Nervous System	21
76	Muscular Dystrophy	0.518	Nervous System	21
77	Multiple Sclerosis	0.423	Nervous System	21
78	Parkinson's and Huntington's Diseases	0.606	Nervous System	21
79	Seizure Disorders and Convulsions	0.220	Nervous System	22-23
80	Coma, Brain Compression/Anoxic Damage	0.486	Nervous System	23
82	Respirator Dependence/Tracheostomy Status	1.000	Respiratory System	30
83	Respiratory Arrest	0.354	Respiratory System	30
84	Cardio-Respiratory Failure and Shock	0.282	Respiratory System	30
85	Congestive Heart Failure	0.331	Circulatory System	26
86	Acute Myocardial Infarction	0.195	Circulatory System	26
87	Unstable Angina and Other Acute Ischemic Heart Diseases	0.195	Circulatory System	27

HCC Number	HCC Description	RAF Score	Category Grouping	Page
88	Angina Pectoris	0.143	Circulatory System	27
96	Specified Heart Arrhythmias	0.268	Circulatory System	27
99	Intracranial Hemorrhage	0.230	Circulatory System	27-28
100	Ischemic or Unspecified Stroke	0.230	Circulatory System	28
103	Hemiplegia/Hemiparesis	0.437	Nervous System	23
104	Monoplegia, Other Paralytic Syndromes	0.331	Nervous System	24
106	Atherosclerosis of the Extremities with Ulceration or Gangrene	1.488	Circulatory System	28
107	Vascular Disease with Complications	0.383	Circulatory System	28
108	Vascular Disease	0.288	Circulatory System	29
110	Cystic Fibrosis	0.510	Respiratory System	30
111	Chronic Obstructive Pulmonary Disease	0.335	Respiratory System	31
112	Fibrosis of Lung and Other Chronic Lung Disorders	0.219	Respiratory System	31
114	Aspiration and Specified Bacterial Pneumonias	0.517	Respiratory System	31
115	Pneumococcal Pneumonia, Empyema, Lung Abscess	0.130	Respiratory System	31
122	Proliferative Diabetic Retinopathy and Vitreous Hemorrhage	0.222	Eye and Adnexa	25
124	Exudative Macular Degeneration	0.521	Eye and Adnexa	25
134	Dialysis Status	0.435	Genitourinary System	38
135	Acute Renal Failure	0.435	Genitourinary System	38
136	Chronic Kidney Disease, Stage 5	0.289	Genitourinary System	38
137	Chronic Kidney Disease, Stage 4 Severe	0.289	Genitourinary System	38
138	Chronic Kidney Disease, Moderate Stage 3	0.069	Genitourinary System	38
157	Pressure Ulcer of Skin with Necrosis Through Muscle, Tendon, or Bone	2.028	Skin and Subcutaneous Tissue	34
158	Pressure Ulcer of Skin with Full Thickness Skin Loss	1.069	Skin and Subcutaneous Tissue	34
159	Pressure Ulcer of Skin with Partial Thickness Skin Loss	0.656	Skin and Subcutaneous Tissue	34
161	Chronic Ulcer of Skin, Except Pressure	0.515	Skin and Subcutaneous Tissue	35
162	Severe Skin Burn or Condition	0.224	Skin and Subcutaneous Tissue	35-36
166	Severe Head Injury	0.486	Injury, Poisoning, and Certain Other	39

HCC Number	HCC Description	RAF Score	Category Grouping	Page
167	Major Head Injury	0.476	Injury, Poisoning, and Certain Other Consequences of External Causes	39
169	Vertebral Fractures without Spinal Cord Injury	0.487	Musculoskeletal System and Connective Tissue	37
170	Hip Fracture/Dislocation	0.350	Injury, Poisoning, and Certain Other Consequences of External Causes	39
173	Traumatic Amputation and Complications	0.208	Injury, Poisoning, and Certain Other Consequences of External Causes	39-40
176	Complications of Specified Implanted Device or Graft	0.582	Injury, Poisoning, and Certain Other Consequences of External Causes	40
186	Major Organ Transplant or Replacement Status	0.832	Factors influencing Health Status	41
188	Artificial Openings for Feeding or Elimination	0.534	Factors influencing Health Status	41
189	Amputation Status, Lower Limb/Amputation Complications	0.519	Factors influencing Health Status	42



# How to Use the Coder Reference Guide



**HCC 1 HIV/AIDS • 0.335**

B20	Human immunodeficiency virus [HIV] disease
B97.35	Human immunodeficiency virus, type 2 [HIV 2] as the cause of diseases classified elsewhere
Z21	Asymptomatic human immunodeficiency virus [HIV] infection status

**HCC 2 Septicemia, Sepsis, Systemic Inflammatory Response Syndrome/Shock • 0.352**

A40.9	Streptococcal sepsis, unspecified
A41.01	Sepsis due to Methicillin susceptible Staphylococcus aureus
A41.02	Sepsis due to Methicillin resistant Staphylococcus aureus
A41.50	Gram-negative sepsis, unspecified
A41.51	Sepsis due to Escherichia coli [E. coli]
A41.52	Sepsis due to Pseudomonas
A41.59	Other Gram-negative sepsis
A41.81	Sepsis due to Enterococcus
A41.89	Other specified sepsis
A41.9	Sepsis, unspecified organism
R57.1	Hypovolemic shock
R65.10	Systemic inflammatory response syndrome (SIRS) of non-infectious origin without acute organ dysfunction
R65.11	Systemic inflammatory response syndrome (SIRS) of non-infectious origin with acute organ dysfunction
R65.20	Severe sepsis without septic shock
R65.21	Severe sepsis with septic shock

**HCC 6 Opportunistic Infections • 0.424**

A07.2	Cryptosporidiosis
A31.0	Pulmonary mycobacterial infection
A31.2	Disseminated mycobacterium avium-intracellulare complex (DMAC)
B25.0	Cytomegaloviral pneumonitis
B25.1	Cytomegaloviral hepatitis
B25.2	Cytomegaloviral pancreatitis
B25.8	Other cytomegaloviral diseases
B25.9	Cytomegaloviral disease, unspecified

**HCC 6 Opportunistic Infections • 0.424**

B37.1	Pulmonary candidiasis
B37.7	Candidal sepsis
B37.81	Candidal esophagitis
B44.0	Invasive pulmonary aspergillosis
B44.1	Other pulmonary aspergillosis
B44.9	Aspergillosis, unspecified
B45.0	Pulmonary cryptococcosis
B45.1	Cerebral cryptococcosis
B45.9	Cryptococcosis, unspecified
B46.1	Rhinocerebral mucormycosis
B46.8	Other zygomycoses
B48.8	Other specified mycoses
B58.2	Toxoplasma meningoencephalitis
B59	Pneumocystosis

**HCC 8 Metastatic Cancer and Acute Leukemia • 2.659**

C77.0	Secondary and unspecified malignant neoplasm of lymph nodes of head, face and neck
C77.1	Secondary and unspecified malignant neoplasm of intrathoracic lymph nodes
C77.2	Secondary and unspecified malignant neoplasm of intra-abdominal lymph nodes
C78.00	Secondary malignant neoplasm of unspecified lung
C78.01	Secondary malignant neoplasm of right lung
C78.02	Secondary malignant neoplasm of left lung
C78.6	Secondary malignant neoplasm of retroperitoneum and peritoneum
C78.7	Secondary malignant neoplasm of liver and intrahepatic bile duct
C79.31	Secondary malignant neoplasm of brain
C79.51	Secondary malignant neoplasm of bone
C79.89	Secondary malignant neoplasm of other specified sites
C79.9	Secondary malignant neoplasm of unspecified site

**HCC 9 Lung and Other Severe Cancers • 1.024**

C15.9	Malignant neoplasm of esophagus, unspecified
C16.9	Malignant neoplasm of stomach, unspecified
C22.0	Liver cell carcinoma
C25.0	Malignant neoplasm of head of pancreas
C25.1	Malignant neoplasm of body of pancreas
C25.2	Malignant neoplasm of tail of pancreas
C25.9	Malignant neoplasm of pancreas, unspecified
C34.11	Malignant neoplasm of upper lobe, right bronchus or lung
C34.12	Malignant neoplasm of upper lobe, left bronchus or lung
C34.31	Malignant neoplasm of lower lobe, right bronchus or lung
C34.32	Malignant neoplasm of lower lobe, left bronchus or lung
C34.90	Malignant neoplasm of unspecified part of unspecified bronchus or lung
C34.91	Malignant neoplasm of unspecified part of right bronchus or lung
C34.92	Malignant neoplasm of unspecified part of left bronchus or lung
C90.00	Multiple myeloma not having achieved remission

**HCC 9 Lung and Other Severe Cancers • 1.024**

C90.01	Multiple myeloma in remission
C90.02	Multiple myeloma in relapse
C92.10	Chronic myeloid leukemia, BCR/ABL-positive, not having achieved remission
C92.11	Chronic myeloid leukemia, BCR/ABL-positive, in remission
C92.12	Chronic myeloid leukemia, BCR/ABL-positive, in relapse

**HCC 10 Lymphoma and Other Cancers • 0.675**

C56.1	Malignant neoplasm of right ovary
C56.2	Malignant neoplasm of left ovary
C56.9	Malignant neoplasm of unspecified ovary
C71.9	Malignant neoplasm of brain, unspecified
C77.3	Secondary and unspecified malignant neoplasm of axilla and upper limb lymph nodes
C77.9	Secondary and unspecified malignant neoplasm of lymph node, unspecified
C83.30	Diffuse large B-cell lymphoma, unspecified site
C83.38	Diffuse large B-cell lymphoma, lymph nodes of multiple sites
C83.39	Diffuse large B-cell lymphoma, extranodal and solid organ sites
C85.10	Unspecified B-cell lymphoma, unspecified site
C85.80	Other specified types of non-Hodgkin lymphoma, unspecified site
C85.90	Non-Hodgkin lymphoma, unspecified, unspecified site
C91.10	Chronic lymphocytic leukemia of B-cell type not having achieved remission

**NOTE:** There are 532 individual codes to choose from under HCC 10. Remember to code to the highest specificity and document accordingly.

**HCC 11 Colorectal, Bladder, and Other Cancers • 0.307**

C01	Malignant neoplasm of base of tongue
C02.9	Malignant neoplasm of tongue, unspecified
C07	Malignant neoplasm of parotid gland
C09.9	Malignant neoplasm of tonsil, unspecified
C18.0	Malignant neoplasm of cecum
C18.2	Malignant neoplasm of ascending colon
C18.7	Malignant neoplasm of sigmoid colon
C18.9	Malignant neoplasm of colon, unspecified

**HCC 11 Colorectal, Bladder, and Other Cancers • 0.307**

C19	Malignant neoplasm of rectosigmoid junction
C20	Malignant neoplasm of rectum
C32.9	Malignant neoplasm of larynx, unspecified
C51.9	Malignant neoplasm of vulva, unspecified
C52	Malignant neoplasm of vagina
C53.0	Malignant neoplasm of endocervix
C64.1	Malignant neoplasm of right kidney, except renal pelvis
C64.2	Malignant neoplasm of left kidney, except renal pelvis
C64.9	Malignant neoplasm of unspecified kidney, except renal pelvis
C67.8	Malignant neoplasm of overlapping sites of bladder
C67.9	Malignant neoplasm of bladder, unspecified

**HCC 12 Breast, Prostate, and Other Cancers and Tumors • 0.150**

C61	Malignant neoplasm of prostate
C50.919	Malignant neoplasm of unspecified site of unspecified female breast
C80.1	Malignant (primary) neoplasm, unspecified
C50.912	Malignant neoplasm of unspecified site of left female breast
C50.911	Malignant neoplasm of unspecified site of right female breast
C54.1	Malignant neoplasm of endometrium
C50.411	Malignant neoplasm of upper-outer quadrant of right female breast
C73	Malignant neoplasm of thyroid gland
C50.412	Malignant neoplasm of upper-outer quadrant of left female breast
C43.9	Malignant melanoma of skin, unspecified
D32.9	Benign neoplasm of meninges, unspecified

**HCC 46 Severe Hematological Disorders • 1.372**

D46.9	Myelodysplastic syndrome, unspecified
D46.Z	Other myelodysplastic syndromes
D59.1	Other autoimmune hemolytic anemias
D59.9	Acquired hemolytic anemia, unspecified
D61.9	Aplastic anemia, unspecified
D75.81	Myelofibrosis

**HCC 47 Disorders of Immunity • 0.665**

D61.810	Antineoplastic chemotherapy induced pancytopenia
D61.818	Other pancytopenia
D70.1	Agranulocytosis secondary to cancer chemotherapy
D70.9	Neutropenia, unspecified
D71	Functional disorders of polymorphonuclear neutrophils
D80.1	Nonfamilial hypogammaglobulinemia
D80.3	Selective deficiency of immunoglobulin G [IgG] subclasses
D83.9	Common variable immunodeficiency, unspecified
D84.9	Immunodeficiency, unspecified
D89.9	Disorder involving the immune mechanism, unspecified

**HCC 48 Coagulation Defects and Other Specified Hematologic Disorders • 0.192**

D47.3	Essential (hemorrhagic) thrombocythemia
D58.2	Other hemoglobinopathies
D68.51	Activated protein C resistance
D68.59	Other primary thrombophilia
D68.9	Coagulation defect, unspecified
D69.2	Other nonthrombocytopenic purpura
D69.3	Immune thrombocytopenic purpura
D69.6	Thrombocytopenia, unspecified

**HCC 17 Diabetes with Acute Complications • 0.302**

E08.00	Diabetes mellitus due to underlying condition with hyperosmolarity without nonketotic hyperglycemic-hyperosmolar coma (NKHHC)
E08.10	Diabetes mellitus due to underlying condition with ketoacidosis without coma
E10.10	Type 1 diabetes mellitus with ketoacidosis without coma
E11.00	Type 2 diabetes mellitus with hyperosmolarity without nonketotic hyperglycemic-hyperosmolar coma (NKHHC)
E11.01	Type 2 diabetes mellitus with hyperosmolarity with coma
E11.10	Type 2 diabetes mellitus with ketoacidosis without coma
E11.641	Type 2 diabetes mellitus with hypoglycemia with coma
E13.10	Other specified diabetes mellitus with ketoacidosis without coma

**HCC 18 Diabetes with Chronic Complications • 0.302**

E10.40	Type 1 diabetes mellitus with diabetic neuropathy, unspecified
E10.41	Type 1 diabetes mellitus with diabetic mononeuropathy
E10.42	Type 1 diabetes mellitus with diabetic polyneuropathy
E10.43	Type 1 diabetes mellitus with diabetic autonomic (poly)neuropathy
E11.21	Type 2 diabetes mellitus with diabetic nephropathy
E11.22	Type 2 diabetes mellitus with diabetic chronic kidney disease
E11.29	Type 2 diabetes mellitus with other diabetic kidney complication
E11.3291	Type 2 diabetes mellitus with mild nonproliferative diabetic retinopathy without macular edema, right eye
E11.3292	Type 2 diabetes mellitus with mild nonproliferative diabetic retinopathy without macular edema, left eye
E11.3293	Type 2 diabetes mellitus with mild nonproliferative diabetic retinopathy without macular edema, bilateral
E11.3299	Type 2 diabetes mellitus with mild nonproliferative diabetic retinopathy without macular edema, unspecified eye
E11.40	Type 2 diabetes mellitus with diabetic neuropathy, unspecified
E11.41	Type 2 diabetes mellitus with diabetic mononeuropathy
E11.42	Type 2 diabetes mellitus with diabetic polyneuropathy
E11.51	Type 2 diabetes mellitus with diabetic peripheral angiopathy without gangrene
E11.52	Type 2 diabetes mellitus with diabetic peripheral angiopathy with gangrene
E11.59	Type 2 diabetes mellitus with other circulatory complications
E11.621	Type 2 diabetes mellitus with foot ulcer
E11.622	Type 2 diabetes mellitus with other skin ulcer



**HCC 18 Diabetes with Chronic Complications • 0.302**

E11.628	Type 2 diabetes mellitus with other skin complications
E11.649	Type 2 diabetes mellitus with Hypoglycemia without coma
E11.65	Type 2 diabetes mellitus with Hyperglycemia
E11.69	Type 2 diabetes mellitus with other specified complication
E11.8	Type 2 diabetes mellitus with unspecified complications

**HCC 19 Diabetes without Complications • 0.105**

E08.9	Diabetes mellitus due to underlying condition without complications
E09.9	Drug or chemical induced diabetes mellitus without complications
E10.9	Type 1 diabetes mellitus without complications
E11.9	Type 2 diabetes mellitus without complications
E13.9	Other specified diabetes mellitus without complications
Z79.4	Long term (current) use of insulin

**HCC 21 Protein-Calorie Malnutrition • 0.455**

E43	Unspecified severe protein-calorie malnutrition
E44.0	Moderate protein-calorie malnutrition
E44.1	Mild protein-calorie malnutrition
E46	Unspecified protein-calorie malnutrition
R64	Cachexia

**HCC 22 Morbid Obesity • 0.250**

E66.01	Morbid (severe) obesity due to excess calories
E66.2	Morbid (severe) obesity with alveolar hypoventilation
Z68.41	Body mass index (BMI) 40.0-44.9, adult
Z68.42	Body mass index (BMI) 45.0-49.9, adult
Z68.43	Body mass index (BMI) 50-59.9, adult
Z68.44	Body mass index (BMI) 60.0-69.9, adult
Z68.45	Body mass index (BMI) 70 or greater, adult

## HCC 23 Other Significant Endocrine and Metabolic Disorders • 0.194

E21.0	Primary hyperparathyroidism
E21.1	Secondary hyperparathyroidism, not elsewhere classified
E21.2	Other hyperparathyroidism
E21.3	Hyperparathyroidism, unspecified
E22.2	Syndrome of inappropriate secretion of antidiuretic hormone
E23.0	Hypopituitarism
E27.40	Unspecified adrenocortical insufficiency
E27.49	Other adrenocortical insufficiency
E27.8	Other specified disorders of adrenal gland
E27.9	Disorder of adrenal gland, unspecified
E72.12	Methylenetetrahydrofolate reductase deficiency
N25.81	Secondary hyperparathyroidism of renal origin

**HCC 54 Substance Use with Psychotic Complications • 0.329**

There are 116 ICD-10 codes associated with HCC 54. For the full list, please see pages 45-49.

F10.150	Alcohol abuse with alcohol-induced psychotic disorder with delusions
F10.151	Alcohol abuse with alcohol-induced psychotic disorder with hallucinations
F10.159	Alcohol abuse with alcohol-induced psychotic disorder, unspecified
F10.150	Opioid abuse with opioid-induced psychotic disorder with delusions
F11.151	Opioid abuse with opioid-induced psychotic disorder with hallucinations
F11.159	Opioid abuse with opioid-induced psychotic disorder, unspecified
F15.250	Other stimulant dependence with stimulant-induced psychotic disorder with delusions
F15.251	Other stimulant dependence with stimulant-induced psychotic disorder with hallucinations
F15.259	Other stimulant dependence with stimulant-induced psychotic disorder, unspecified

**HCC 55 Substance Use Disorder, Moderate/Severe, or Substance Use with Complications • 0.329**

F10.120	Alcohol abuse with intoxication, uncomplicated
F10.121	Alcohol abuse with intoxication delirium
F10.129	Alcohol abuse with intoxication, unspecified
F10.14	Alcohol abuse with alcohol-induced mood disorder
F10.180	Alcohol abuse with alcohol-induced anxiety disorder

**NOTE:** There are 328 ICD-10 codes that are part of HCC 55.

**HCC 56 Substance Use Disorder, Mild, Except Alcohol and Cannabis • 0.329**

F11.10	Opioid abuse, uncomplicated
F11.11	Opioid abuse, in remission
F13.10	Sedative, hypnotic or anxiolytic abuse, uncomplicated
F13.11	Sedative, hypnotic or anxiolytic abuse, in remission
F14.10	Cocaine abuse, uncomplicated
F14.11	Cocaine abuse, in remission
F15.10	Other stimulant abuse, uncomplicated
F15.11	Other stimulant abuse, in remission
F16.10	Hallucinogen abuse, uncomplicated
F16.11	Hallucinogen abuse, in remission
F18.10	Inhalant abuse, uncomplicated

**HCC 56 Substance Use Disorder, Mild, Except Alcohol and Cannabis • 0.329**

F18.11	Inhalant abuse, in remission
F19.10	Other psychoactive substance abuse, uncomplicated
F19.11	Other psychoactive substance abuse, in remission

**HCC 57 Schizophrenia • 0.524**

F20.0	Paranoid schizophrenia
F20.89	Other schizophrenia
F20.9	Schizophrenia, unspecified
F25.0	Schizoaffective disorder, bipolar type
F25.1	Schizoaffective disorder, depressive type
F25.8	Other schizoaffective disorders
F25.9	Schizoaffective disorder, unspecified

**HCC 58 Reactive and Unspecified Psychosis • 0.393**

F23	Brief psychotic disorder
F28	Other psychotic disorder not due to a substance or known physiological condition
F29	Unspecified psychosis not due to a substance or known physiological condition
F53.1	Puerperal psychosis

**HCC 59 Major Depressive, Bipolar, and Paranoid Disorders • 0.309**

F22	Delusional disorders
F31.32	Bipolar disorder, current episode depressed, moderate
F31.81	Bipolar II disorder
F31.9	Bipolar disorder, unspecified
F32.0	Major depressive disorder, single episode, mild
F32.1	Major depressive disorder, single episode, moderate
F32.2	Major depressive disorder, single episode, severe without psychotic features
F33.0	Major depressive disorder, recurrent, mild
F33.1	Major depressive disorder, recurrent, moderate
F33.2	Major depressive disorder, recurrent severe without psychotic features
F33.3	Major depressive disorder, recurrent, severe with psychotic symptoms

**HCC 59 Major Depressive, Bipolar, and Paranoid Disorders • 0.309**

F33.41	Major depressive disorder, recurrent, in partial remission
F33.42	Major depressive disorder, recurrent, in full remission
F33.8	Other recurrent depressive disorders
F33.9	Major depressive disorder, recurrent, unspecified
F39	Unspecified mood [affective] disorder

**HCC 60 Personality Disorders • 0.309**

F44.81	Dissociative identity disorder
F60.0	Paranoid personality disorder
F60.3	Borderline personality disorder
F60.5	Obsessive-compulsive personality disorder
F60.7	Dependent personality disorder
F60.89	Other specific personality disorders
F60.9	Personality disorder, unspecified

**HCC 51 Dementia With Complications • 0.346**

F01.51	Vascular dementia with behavioral disturbance
F01.81	Dementia in other diseases classified elsewhere with behavioral disturbance
F03.91	Unspecified dementia with behavioral disturbance
G910	Communicating hydrocephalus
G912	Obstructive hydrocephalus
G913	(Idiopathic) normal pressure hydrocephalus
G914	Post-traumatic hydrocephalus, unspecified
G918	Hydrocephalus in diseases classified elsewhere
G919	Other hydrocephalus

**HCC 52 Dementia Without Complications • 0.346**

G300	Alzheimer's disease with early onset
G301	Alzheimer's disease with late onset
G308	Other Alzheimer's disease
G309	Alzheimer's disease, unspecified
G3189	Other specified degenerative diseases of nervous system
G319	Degenerative disease of nervous system, unspecified
G937	Reye's syndrome

**HCC 70 Quadriplegia • 1.242**

G82.50	Quadriplegia, unspecified
G82.51	Quadriplegia, C1-C4 complete
G82.52	Quadriplegia, C1-C4 incomplete
G82.53	Quadriplegia, C5-C7 complete
G82.54	Quadriplegia, C5-C7 incomplete
R53.2	Functional quadriplegia

**HCC 71 Paraplegia • 1.068**

G82.20	Paraplegia, unspecified
G82.21	Paraplegia, complete
G82.22	Paraplegia, incomplete

**HCC 72 Spinal Cord Disorders/Injuries • 0.481**

G11.9	Hereditary ataxia, unspecified
G95.19	Other vascular myelopathies
G95.20	Unspecified cord compression
G95.29	Other cord compression
G95.89	Other specified diseases of spinal cord
G95.9	Disease of spinal cord, unspecified

**HCC 73 Amyotrophic Lateral Sclerosis and Other Motor Neuron Diseases • 0.999**

G12.20	Motor neuron disease, unspecified
G12.21	Amyotrophic lateral sclerosis
G12.22	Progressive bulbar palsy
G12.23	Primary lateral sclerosis
G12.29	Other motor neuron disease

**HCC 74 Cerebral Palsy • 0.339**

G80.0	Spastic quadriplegic cerebral palsy
G80.1	Spastic diplegic cerebral palsy
G80.2	Spastic hemiplegic cerebral palsy
G80.3	Athetoid cerebral palsy
G80.4	Ataxic cerebral palsy
G80.8	Other cerebral palsy
G80.9	Cerebral palsy, unspecified

**HCC 75 Myasthenia Gravis/Myoneural Disorders, Inflammatory and Toxic Neuropathy • 0.472**

G61.0	Guillain-Barre syndrome
G61.81	Chronic inflammatory demyelinating polyneuritis
G62.0	Drug-induced polyneuropathy
G63	Polyneuropathy in diseases classified elsewhere
G70.00	Myasthenia gravis without (acute) exacerbation
G70.01	Myasthenia gravis with (acute) exacerbation
G70.9	Myoneural disorder, unspecified

**HCC 76 Muscular Dystrophy • 0.518**

G71.00	Muscular dystrophy, unspecified
G71.11	Myotonic muscular dystrophy
G71.2	Congenital myopathies

**HCC 77 Multiple Sclerosis • 0.423**

G35	Multiple sclerosis
G36.0	Neuromyelitis optica [Devic]
G37.8	Other specified demyelinating diseases of central nervous system
G37.9	Demyelinating disease of central nervous system, unspecified

**HCC 78 Parkinson's and Huntington's Disease • 0.606**

G10	Huntington's disease
G20	Parkinson's disease
G21.8	Other secondary parkinsonism
G21.9	Secondary parkinsonism, unspecified
G23.1	Progressive supranuclear ophthalmoplegia [Steele-Richardson-Olszewski]
G23.2	Striatonigral degeneration
G23.8	Other specified degenerative diseases of basal ganglia
G90.3	Multi-system degeneration of the autonomic nervous system

**HCC 79 Seizure Disorders and Convulsions • 0.220**

G40.209	Localization-related (focal) (partial) symptomatic epilepsy and epileptic syndromes with complex partial seizures, not intractable, without status epilepticus
G40.211	Localization-related (focal) (partial) symptomatic epilepsy and epileptic syndromes with complex partial seizures, intractable, with status epilepticus
G40.219	Localization-related (focal) (partial) symptomatic epilepsy and epileptic syndromes with complex partial seizures, intractable, without status epilepticus
G40.301	Generalized idiopathic epilepsy and epileptic syndromes, not intractable, with status epilepticus
G40.409	Other generalized epilepsy and epileptic syndromes, not intractable, without status epilepticus
G40.89	Other seizures
G40.901	Epilepsy, unspecified, not intractable, with status epilepticus



**HCC 79 Seizure Disorders and Convulsions • 0.220**

G40.909	Epilepsy, unspecified, not intractable, without status epilepticus
G40.911	Epilepsy, unspecified, intractable, with status epilepticus
G40.919	Epilepsy, unspecified, intractable, without status epilepticus
R56.9	Unspecified convulsions

**HCC 80 Coma, Brain Compression/Anoxic Damage • 0.486**

G93.1	Anoxic brain damage, not elsewhere classified
G93.5	Compression of brain
G93.6	Cerebral edema
R40.20	Unspecified coma

**HCC 103 Hemiplegia/Hemiparesis • 0.437**

G81.90	Hemiplegia, unspecified affecting unspecified side
G81.91	Hemiplegia, unspecified affecting right dominant side
G81.92	Hemiplegia, unspecified affecting left dominant side
G81.93	Hemiplegia, unspecified affecting right nondominant side
G81.94	Hemiplegia, unspecified affecting left nondominant side
I69.351	Hemiplegia and hemiparesis following cerebral infarction affecting right dominant side
I69.352	Hemiplegia and hemiparesis following cerebral infarction affecting left dominant side
I69.353	Hemiplegia and hemiparesis following cerebral infarction affecting right non-dominant side
I69.354	Hemiplegia and hemiparesis following cerebral infarction affecting left non-dominant side
I69.359	Hemiplegia and hemiparesis following cerebral infarction affecting unspecified side
I69.951	Hemiplegia and hemiparesis following unspecified cerebrovascular disease affecting right dominant side
I69.952	Hemiplegia and hemiparesis following unspecified cerebrovascular disease affecting left dominant side
I69.954	Hemiplegia and hemiparesis following unspecified cerebrovascular disease affecting left non-dominant side
I69.959	Hemiplegia and hemiparesis following unspecified cerebrovascular disease affecting unspecified side

**HCC 104 Monoplegia, Other Paralytic Syndromes • 0.331**

G83.10	Monoplegia of lower limb affecting unspecified side
G83.11	Monoplegia of lower limb affecting right dominant side
G83.89	Other specified paralytic syndromes
G83.9	Paralytic syndrome, unspecified

**HCC 104 Monoplegia, Other Paralytic Syndromes • 0.331**

169.331	Monoplegia of upper limb following cerebral infarction affecting right dominant side
169.334	Monoplegia of upper limb following cerebral infarction affecting left non-dominant side
169.339	Monoplegia of upper limb following cerebral infarction affecting unspecified side
169.341	Monoplegia of lower limb following cerebral infarction affecting right dominant side
169.344	Monoplegia of lower limb following cerebral infarction affecting left non-dominant side

**HCC 122 Proliferative Diabetic Retinopathy and Vitreous Hemorrhage • 0.222**

E11.3511	Other specified diabetes mellitus with proliferative diabetic retinopathy with macular edema, right eye
E11.3512	Other specified diabetes mellitus with proliferative diabetic retinopathy with macular edema, left eye
E11.3513	Other specified diabetes mellitus with proliferative diabetic retinopathy with macular edema, bilateral
E11.3591	Type 2 diabetes mellitus with proliferative diabetic retinopathy without macular edema, right eye
E11.3592	Type 2 diabetes mellitus with proliferative diabetic retinopathy without macular edema, left eye
E11.3593	Type 2 diabetes mellitus with proliferative diabetic retinopathy without macular edema, bilateral
E11.3599	Type 2 diabetes mellitus with proliferative diabetic retinopathy without macular edema, unspecified eye
H43.11	Vitreous hemorrhage, right eye
H43.12	Vitreous hemorrhage, left eye

**HCC 124 Exudative Macular Degeneration • 0.521**

H35.3211	Exudative age-related macular degeneration, right eye, with active choroidal neovascularization
H35.3212	Exudative age-related macular degeneration, right eye, with inactive choroidal neovascularization
H35.3213	Exudative age-related macular degeneration, right eye, with inactive scar
H35.3221	Exudative age-related macular degeneration, left eye, with active choroidal neovascularization
H35.3222	Exudative age-related macular degeneration, left eye, with inactive choroidal neovascularization
H35.3223	Exudative age-related macular degeneration, left eye, with inactive scar
H35.3231	Exudative age-related macular degeneration, bilateral, with active choroidal neovascularization
H35.3232	Exudative age-related macular degeneration, bilateral, with inactive choroidal neovascularization

**HCC 85 Congestive Heart Failure • 0.331**

I11.0	Hypertensive heart disease with heart failure
I13.0	Hypertensive heart and chronic kidney disease with heart failure and stage 1 through stage 4 chronic kidney disease, or unspecified chronic kidney disease
I13.2	Hypertensive heart and chronic kidney disease with heart failure and with stage 5 chronic kidney disease, or end stage renal disease
I27.0	Primary pulmonary hypertension
I27.20	Pulmonary hypertension, unspecified
I42.0	Dilated cardiomyopathy
I42.8	Other cardiomyopathies
I42.9	Cardiomyopathy, unspecified
I50.22	Chronic systolic (congestive) heart failure
I50.23	Acute on chronic systolic (congestive) heart failure
I50.30	Unspecified diastolic (congestive) heart failure
I50.31	Acute diastolic (congestive) heart failure
I50.32	Chronic diastolic (congestive) heart failure
I50.33	Acute on chronic diastolic (congestive) heart failure
I50.42	Chronic combined systolic (congestive) and diastolic (congestive) heart failure
I50.9	Heart failure, unspecified

**HCC 86 Acute Myocardial Infarction • 0.195**

I21.02	ST elevation (STEMI) myocardial infarction involving left anterior descending coronary artery
I21.09	ST elevation (STEMI) myocardial infarction involving other coronary artery of anterior wall
I21.11	ST elevation (STEMI) myocardial infarction involving right coronary artery
I21.19	ST elevation (STEMI) myocardial infarction involving other coronary artery of inferior wall
I21.29	ST elevation (STEMI) myocardial infarction involving other sites
I21.3	ST elevation (STEMI) myocardial infarction of unspecified site
I21.4	Non-ST elevation (NSTEMI) myocardial infarction
I21.9	Acute myocardial infarction, unspecified
I21.A1	Myocardial infarction type 2

**HCC 87 Unstable Angina and Other Acute Ischemic Heart Diseases • 0.195**

I20.0	Unstable angina
I24.8	Other forms of acute ischemic heart disease
I24.9	Acute ischemic heart disease, unspecified
I25.110	Atherosclerotic heart disease of native coronary artery with unstable angina pectoris

**HCC 88 Angina Pectoris • 0.135**

I20.1	Angina pectoris with documented spasm
I20.8	Other forms of angina pectoris
I20.9	Angina pectoris, unspecified
I25.111	Atherosclerotic heart disease of native coronary artery with angina pectoris with documented spasm
I25.118	Atherosclerotic heart disease of native coronary artery with other forms of angina pectoris
I25.119	Atherosclerotic heart disease of native coronary artery with unspecified angina pectoris

**HCC 96 Specified Heart Arrhythmias • 0.268**

I44.2	Atrioventricular block, complete
I47.1	Supraventricular tachycardia
I47.2	Ventricular tachycardia
I47.9	Paroxysmal tachycardia, unspecified
I48.0	Paroxysmal atrial fibrillation
I48.3	Typical atrial flutter
I48.4	Atypical atrial flutter
I48.91	Unspecified atrial fibrillation
I48.92	Unspecified atrial flutter
I49.5	Sick sinus syndrome

**HCC 99 Intracranial Hemorrhage • 0.230**

I60.9	Nontraumatic subarachnoid hemorrhage, unspecified
I61.8	Other nontraumatic intracerebral hemorrhage
I61.9	Nontraumatic intracerebral hemorrhage, unspecified
I62.00	Nontraumatic subdural hemorrhage, unspecified
I62.01	Nontraumatic acute subdural hemorrhage

**HCC 99 Intracranial Hemorrhage • 0.230**

162.02	Nontraumatic subacute subdural hemorrhage
162.03	Nontraumatic chronic subdural hemorrhage
162.9	Nontraumatic intracranial hemorrhage, unspecified

**HCC 100 Ischemic or Unspecified Stroke • 0.230**

163.40	Cerebral infarction due to embolism of unspecified cerebral artery
163.411	Cerebral infarction due to embolism of right middle cerebral artery
163.412	Cerebral infarction due to embolism of left middle cerebral artery
163.50	Cerebral infarction due to unspecified occlusion or stenosis of unspecified cerebral artery
163.511	Cerebral infarction due to unspecified occlusion or stenosis of right middle cerebral artery
163.512	Cerebral infarction due to unspecified occlusion or stenosis of left middle cerebral artery
163.89	Other cerebral infarction
163.9	Cerebral infarction, unspecified

**HCC 106 Atherosclerosis of the Extremities with Ulceration or Gangrene • 1.488**

E11.52	Type 2 diabetes mellitus with diabetic peripheral angiopathy with gangrene
I70.235	Atherosclerosis of native arteries of right leg with ulceration of other part of foot
I70.245	Atherosclerosis of native arteries of left leg with ulceration of other part of foot
I96	Gangrene, not elsewhere classified

**HCC 107 Vascular Disease with Complications • 0.383**

I26.09	Other pulmonary embolism with acute cor pulmonale
I26.99	Other pulmonary embolism without acute cor pulmonale
I27.82	Chronic pulmonary embolism
I74.3	Embolism and thrombosis of arteries of the lower extremities
I74.5	Embolism and thrombosis of iliac artery
I74.8	Embolism and thrombosis of other arteries
I74.9	Embolism and thrombosis of unspecified artery
I83.009	Varicose veins of unspecified lower extremity with ulcer of unspecified site

## HCC 108 Vascular Disease • 0.288

E11.51	Type 2 diabetes mellitus with diabetic peripheral angiopathy without gangrene
E11.52	Type 2 diabetes mellitus with diabetic peripheral angiopathy with gangrene
I70.0	Atherosclerosis of aorta
I70.1	Atherosclerosis of renal artery
I70.201	Unspecified atherosclerosis of native arteries of extremities, right leg
I70.202	Unspecified atherosclerosis of native arteries of extremities, left leg
I70.203	Unspecified atherosclerosis of native arteries of extremities, bilateral legs
I70.208	Unspecified atherosclerosis of native arteries of extremities, other extremity
I70.209	Unspecified atherosclerosis of native arteries of extremities, unspecified extremity
I70.211	Atherosclerosis of native arteries of extremities with intermittent claudication, right leg
I70.212	Atherosclerosis of native arteries of extremities with intermittent claudication, left leg
I70.213	Atherosclerosis of native arteries of extremities with intermittent claudication, bilateral legs
I70.293	Other atherosclerosis of native arteries of extremities, bilateral legs
I71.2	Thoracic aortic aneurysm, without rupture
I71.4	Abdominal aortic aneurysm, without rupture
I73.89	Other specified peripheral vascular diseases
I73.9	Peripheral vascular disease, unspecified
I77.1	Stricture of artery
I77.810	Thoracic aortic ectasia
I77.811	Abdominal aortic ectasia
I77.819	Aortic ectasia, unspecified site
I82.401	Acute embolism and thrombosis of unspecified deep veins of right lower extremity
I82.402	Acute embolism and thrombosis of unspecified deep veins of left lower extremity
I82.403	Acute embolism and thrombosis of unspecified deep veins of lower extremity, bilateral
I82.409	Acute embolism and thrombosis of unspecified deep veins of unspecified lower extremity

**NOTE:** There are 324 separate and distinct ICD-10 codes that roll into HCC 108.

**HCC 82 Respirator Dependence/Tracheostomy Status • 1.000**

J95.03	Malfunction of tracheostomy stoma
J95.09	Other tracheostomy complication
Z43.0	Encounter for attention to tracheostomy
Z93.0	Tracheostomy status
Z99.11	Dependence on respirator [ventilator] status

**HCC 83 Respiratory Arrest • 0.354**

R09.2	Respiratory arrest
-------	--------------------

**HCC 84 Cardio-Respiratory Failure and Shock • 0.282**

I46.9	Cardiac arrest, cause unspecified
J81.0	Acute pulmonary edema
J96.00	Acute respiratory failure, unspecified whether with hypoxia or hypercapnia
J96.01	Acute respiratory failure with hypoxia
J96.02	Acute respiratory failure with hypercapnia
J96.10	Chronic respiratory failure, unspecified whether with hypoxia or hypercapnia
J96.11	Chronic respiratory failure with hypoxia
J96.12	Chronic respiratory failure with hypercapnia
J96.20	Acute and chronic respiratory failure, unspecified whether with hypoxia or hypercapnia
J96.21	Acute and chronic respiratory failure with hypoxia
J96.22	Acute and chronic respiratory failure with hypercapnia
J96.90	Respiratory failure, unspecified, unspecified whether with hypoxia or hypercapnia
J96.91	Respiratory failure, unspecified with hypoxia

**HCC 110 Cystic Fibrosis • 0.510**

E84.0	Cystic fibrosis with pulmonary manifestations
E84.11	Meconium ileus in cystic fibrosis
E84.19	Cystic fibrosis with other intestinal manifestations
E84.8	Cystic fibrosis with other manifestations
E84.9	Cystic fibrosis, unspecified



**HCC 111 Chronic Obstructive Pulmonary Disease • 0.335**

J42	Unspecified chronic bronchitis
J43.2	Centrilobular emphysema
J43.8	Other emphysema
J43.9	Emphysema, unspecified
J44.0	Chronic obstructive pulmonary disease with (acute) lower respiratory infection
J44.1	Chronic obstructive pulmonary disease with (acute) exacerbation
J44.9	Chronic obstructive pulmonary disease, unspecified

**HCC 112 Fibrosis of Lung and Other Chronic Lung Disorders • 0.219**

D86.0	Sarcoidosis of lung
J47.1	Bronchiectasis with (acute) exacerbation
J47.9	Bronchiectasis, uncomplicated
J84.10	Pulmonary fibrosis, unspecified
J84.112	Idiopathic pulmonary fibrosis
J84.89	Other specified interstitial pulmonary diseases
J84.9	Interstitial pulmonary disease, unspecified

**HCC 114 Aspiration and Specified Bacterial Pneumonias • 0.517**

J15.1	Pneumonia due to Pseudomonas
J15.212	Pneumonia due to Methicillin resistant Staphylococcus aureus
J15.6	Pneumonia due to other Gram-negative bacteria
J15.8	Pneumonia due to other specified bacteria
J69.0	Pneumonitis due to inhalation of food and vomit

**HCC 115 Pneumococcal Pneumonia, Empyema, Lung Abscess • 0.130**

J13	Pneumonia due to Streptococcus pneumoniae
J14	Pneumonia due to Hemophilus influenzae
J15.3	Pneumonia due to streptococcus, group B
J15.4	Pneumonia due to other streptococci
J18.1	Lobar pneumonia, unspecified organism
J86.0	Pyothorax with fistula
J86.9	Pyothorax without fistula

**HCC 27 End-Stage Liver Disease • 0.882**

I85.00	Esophageal varices without bleeding
I85.01	Esophageal varices with bleeding
I85.10	Secondary esophageal varices without bleeding
I85.11	Secondary esophageal varices with bleeding
K72.10	Chronic hepatic failure without coma
K72.11	Chronic hepatic failure with coma
K72.90	Hepatic failure, unspecified without coma
K72.91	Hepatic failure, unspecified with coma
K76.6	Portal hypertension

**HCC 28 Cirrhosis of Liver • 0.363**

K70.30	Alcoholic cirrhosis of liver without ascites
K70.31	Alcoholic cirrhosis of liver with ascites
K74.3	Primary biliary cirrhosis
K74.60	Unspecified cirrhosis of liver
K74.69	Other cirrhosis of liver

**HCC 29 Chronic Hepatitis • 0.147**

B18.0	Chronic viral hepatitis B with delta-agent
B18.1	Chronic viral hepatitis B without delta-agent
B18.2	Chronic viral hepatitis C
B18.9	Chronic viral hepatitis, unspecified
K73.9	Chronic hepatitis, unspecified
K75.4	Autoimmune hepatitis

**HCC 33 Intestinal Obstruction/Perforation • 0.219**

K56.0	Paralytic ileus
K56.41	Fecal impaction
K56.609	Unspecified intestinal obstruction, unspecified as to partial versus complete obstruction
K56.690	Other partial intestinal obstruction
K56.699	Other intestinal obstruction unspecified as to partial versus complete obstruction

**HCC 33 Intestinal Obstruction/Perforation • 0.219**

K56.7	Ileus, unspecified
K63.1	Perforation of intestine (nontraumatic)
K65.1	Peritoneal abscess
K65.9	Peritonitis, unspecified

**HCC 34 Chronic Pancreatitis • 0.287**

K86.0	Alcohol-induced chronic pancreatitis
K86.1	Other chronic pancreatitis

**HCC 35 Inflammatory Bowel Disease • 0.308**

K50.00	Crohn's disease of small intestine without complications
K50.10	Crohn's disease of large intestine without complications
K50.80	Crohn's disease of both small and large intestine without complications
K50.90	Crohn's disease, unspecified, without complications
K51.00	Ulcerative (chronic) pancolitis without complications
K51.90	Ulcerative colitis, unspecified, without complications

**HCC 157 Pressure Ulcer of Skin with Necrosis Through Muscle, Tendon or Bone • 2.028**

L89.154	Pressure ulcer of sacral region, stage 4
L89.304	Pressure ulcer of unspecified buttock, stage 4
L89.314	Pressure ulcer of right buttock, stage 4
L89.324	Pressure ulcer of left buttock, stage 4
L89.894	Pressure ulcer of other site, stage 4
L89.94	Pressure ulcer of unspecified site, stage 4

**HCC 158 Pressure Ulcer of Skin with Full Thickness Skin Loss • 1.069**

L89.150	Pressure ulcer of sacral region, unstageable
L89.153	Pressure ulcer of sacral region, stage 3
L89.310	Pressure ulcer of right buttock, unstageable
L89.313	Pressure ulcer of right buttock, stage 3
L89.320	Pressure ulcer of left buttock, unstageable
L89.323	Pressure ulcer of left buttock, stage 3
L89.610	Pressure ulcer of right heel, unstageable
L89.613	Pressure ulcer of right heel, stage 3
L89.620	Pressure ulcer of left heel, unstageable
L89.890	Pressure ulcer of other site, unstageable
L89.893	Pressure ulcer of other site, stage 3

**HCC 159 Pressure Ulcer of Skin with Partial Thickness Skin Loss • 0.656**

L89.152	Pressure ulcer of sacral region, stage 2
L89.202	Pressure ulcer of unspecified hip, stage 2
L89.212	Pressure ulcer of right hip, stage 2
L89.222	Pressure ulcer of left hip, stage 2
L89.302	Pressure ulcer of unspecified buttock, stage 2
L89.312	Pressure ulcer of right buttock, stage 2
L89.322	Pressure ulcer of left buttock, stage 2
L89.42	Pressure ulcer of contiguous site of back, buttock and hip, stage 2
L89.892	Pressure ulcer of other site, stage 2
L89.92	Pressure ulcer of unspecified site, stage 2

**HCC 161 Chronic Ulcer of Skin, Except Pressure • 0.515**

E11.621	Type 2 diabetes mellitus with foot ulcer
E11.622	Type 2 diabetes mellitus with other skin ulcer
L97.509	Non-pressure chronic ulcer of other part of unspecified foot with unspecified severity
L97.511	Non-pressure chronic ulcer of other part of right foot limited to breakdown of skin
L97.512	Non-pressure chronic ulcer of other part of right foot with fat layer exposed
L97.519	Non-pressure chronic ulcer of other part of right foot with unspecified severity
L97.521	Non-pressure chronic ulcer of other part of left foot limited to breakdown of skin
L97.522	Non-pressure chronic ulcer of other part of left foot with fat layer exposed
L97.529	Non-pressure chronic ulcer of other part of left foot with unspecified severity
L97.811	Non-pressure chronic ulcer of other part of right lower leg limited to breakdown of skin
L97.821	Non-pressure chronic ulcer of other part of left lower leg limited to breakdown of skin
L97.919	Non-pressure chronic ulcer of unspecified part of right lower leg with unspecified severity
L97.929	Non-pressure chronic ulcer of unspecified part of left lower leg with unspecified severity
L98.491	Non-pressure chronic ulcer of skin of other sites limited to breakdown of skin
L98.499	Non-pressure chronic ulcer of skin of other sites with unspecified severity

**HCC 162 Severe Skin Burn or Condition • 0.224**

L12.30	Acquired epidermolysis bullosa, unspecified
L51.1	Stevens-Johnson syndrome
L51.2	Toxic epidermal necrolysis [Lyell]
T31.11	Burns involving 10-19% of body surface with 10-19% third degree burns
T31.21	Burns involving 20-29% of body surface with 10-19% third degree burns
T31.22	Burns involving 20-29% of body surface with 20-29% third degree burns
T31.31	Burns involving 30-39% of body surface with 10-19% third degree burns
T31.32	Burns involving 30-39% of body surface with 20-29% third degree burns
T31.33	Burns involving 30-39% of body surface with 30-39% third degree burns
T31.41	Burns involving 40-49% of body surface with 10-19% third degree burns
T31.42	Burns involving 40-49% of body surface with 20-29% third degree burns
T31.51	Burns involving 50-59% of body surface with 10-19% third degree burns

**NOTE:** There are 96 ICD-10 codes to choose from under HCC 162.

**HCC 162 Severe Skin Burn or Condition • 0.224**

T31.52	Burns involving 50-59% of body surface with 20-29% third degree burns
T31.61	Burns involving 60-69% of body surface with 10-19% third degree burns
T31.62	Burns involving 60-69% of body surface with 20-29% third degree burns
T31.71	Burns involving 70-79% of body surface with 10-19% third degree burns
T31.72	Burns involving 70-79% of body surface with 20-29% third degree burns
T31.81	Burns involving 80-89% of body surface with 10-19% third degree burns
T31.82	Burns involving 80-89% of body surface with 20-29% third degree burns
T31.99	Burns involving 90% or more of body surface with 90% or more third degree burns

**HCC 39 Bone, Joint and Muscle Infections/Necrosis • 0.401**

M00.9	Pyogenic arthritis, unspecified
M86.171	Other acute osteomyelitis, right ankle and foot
M86.172	Other acute osteomyelitis, left ankle and foot
M86.8X7	Other osteomyelitis, ankle and foot
M86.9	Osteomyelitis, unspecified
M87.051	Idiopathic aseptic necrosis of right femur
M87.052	Idiopathic aseptic necrosis of left femur
M87.9	Osteonecrosis, unspecified

**HCC 40 Rheumatoid Arthritis and Inflammatory Connective Tissue Disease • 0.421**

M05.79	Rheumatoid arthritis with rheumatoid factor of multiple sites without organ or systems involvement
M05.9	Rheumatoid arthritis with rheumatoid factor, unspecified
M06.00	Rheumatoid arthritis without rheumatoid factor, unspecified site
M06.09	Rheumatoid arthritis without rheumatoid factor, multiple sites
M06.4	Inflammatory polyarthropathy
M06.9	Rheumatoid arthritis, unspecified
M32.9	Systemic lupus erythematosus, unspecified
M35.00	Sicca syndrome, unspecified
M35.01	Sicca syndrome with keratoconjunctivitis
M35.3	Polymyalgia rheumatica
M46.1	Sacroiliitis, not elsewhere classified

**HCC 169 Vertebral Fractures without Spinal Cord Injury • 0.476**

M48.50XA	Collapsed vertebra, not elsewhere classified, site unspecified, initial encounter for fracture
M48.54XA	Collapsed vertebra, not elsewhere classified, thoracic region, initial encounter for fracture
M48.56XA	Collapsed vertebra, not elsewhere classified, lumbar region, initial encounter for fracture
M80.08XA	Age-related osteoporosis with current pathological fracture, vertebra(e), initial encounter for fracture
S32.010A	Wedge compression fracture of first lumbar vertebra, initial encounter for closed fracture

**HCC 134 Dialysis Status • 0.435**

T82.49XA	Other complication of vascular dialysis catheter, initial encounter
Z49.01	Encounter for fitting and adjustment of extracorporeal dialysis catheter
Z49.02	Encounter for fitting and adjustment of peritoneal dialysis catheter
Z91.15	Patient's noncompliance with renal dialysis
Z99.2	Dependence on renal dialysis

**HCC 135 Acute Renal Failure • 0.435**

N17.0	Acute kidney failure with tubular necrosis
N17.8	Other acute kidney failure
N17.9	Acute kidney failure, unspecified

**HCC 136 Chronic Kidney Disease, Stage 5 • 0.289**

I12.0	Hypertensive chronic kidney disease with stage 5 chronic kidney disease or end stage renal disease
I13.2	Hypertensive heart and chronic kidney disease with heart failure and with stage 5 chronic kidney disease, or end stage renal disease
I13.11	Hypertensive heart and chronic kidney disease without heart failure, with stage 5 chronic kidney disease, or end stage renal disease
N18.5	Chronic kidney disease, stage 5
N18.6	End stage renal disease

**HCC 137 Chronic Kidney Disease, Stage 4 Severe • 0.289**

N18.4	Chronic kidney disease, stage 4 (severe)
-------	--

**HCC 138 Chronic Kidney Disease, Moderate Stage 3 • 0.069**

N18.3	Chronic kidney disease, stage 3 (moderate)
N18.30	Chronic Kidney Disease, stage 3 (unspecified)
N18.31	Chronic Kidney Disease, stage 3a
N18.32	Chronic Kidney Disease, stage 3b



**HCC 166 Severe Head Injury • 0.486**

S06.2X5A	Diffuse traumatic brain injury with loss of consciousness greater than 24 hours with return to pre-existing conscious levels, initial encounter
S06.2X6A	Diffuse traumatic brain injury with loss of consciousness greater than 24 hours without return to pre-existing conscious level with patient surviving, initial encounter
S06.9X6A	Unspecified intracranial injury with loss of consciousness greater than 24 hours without return to pre-existing conscious level with patient surviving, initial encounter

**HCC 167 Major Head Injury • 0.077**

S06.5X0A	Traumatic subdural hemorrhage without loss of consciousness, initial encounter
S06.5X9A	Traumatic subdural hemorrhage with loss of consciousness of unspecified duration, initial encounter
S06.6X0A	Traumatic subarachnoid hemorrhage without loss of consciousness, initial encounter
S06.6X9A	Traumatic subarachnoid hemorrhage with loss of consciousness of unspecified duration, initial encounter
S06.9X0A	Unspecified intracranial injury without loss of consciousness, initial encounter
S06.9X0S	Unspecified intracranial injury without loss of consciousness, sequela
S06.9X9A	Unspecified intracranial injury with loss of consciousness of unspecified duration, initial encounter
S06.9X9S	Unspecified intracranial injury with loss of consciousness of unspecified duration, sequela

**HCC 170 Hip Fracture/Dislocation • 0.350**

S32.591A	Other specified fracture of right pubis, initial encounter for closed fracture
S32.592A	Other specified fracture of left pubis, initial encounter for closed fracture
S72.001A	Fracture of unspecified part of neck of right femur, initial encounter for closed fracture
S72.002A	Fracture of unspecified part of neck of left femur, initial encounter for closed fracture
S72.141A	Displaced intertrochanteric fracture of right femur, initial encounter for closed fracture
S72.142A	Displaced intertrochanteric fracture of left femur, initial encounter for closed fracture
S72.91XA	Unspecified fracture of right femur, initial encounter for closed fracture
S72.92XA	Unspecified fracture of left femur, initial encounter for closed fracture

**HCC 173 Traumatic Amputations and Complications • 0.208**

S88.111A	Complete traumatic amputation at level between knee and ankle, right lower leg, initial encounter
S88.112A	Complete traumatic amputation at level between knee and ankle, left lower leg, initial encounter
T79.2XXA	Traumatic secondary and recurrent hemorrhage and seroma, initial encounter
T79.4XXA	Traumatic shock, initial encounter

**NOTE:** There are 145 ICD-10 codes that roll into HCC 173.

**HCC 173 Traumatic Amputation and Complications • 0.208**

T79.6XXA Traumatic ischemia of muscle, initial encounter

T79.7XXA Traumatic subcutaneous emphysema, initial encounter

**HCC 176 Complications of Specified Implanted Device or Graft • 0.582**

T82.7XXA Infection and inflammatory reaction due to other cardiac and vascular devices, implants and grafts, initial encounter

T82.858A Stenosis of other vascular prosthetic devices, implants and grafts, initial encounter

T82.868A Thrombosis due to vascular prosthetic devices, implants and grafts, initial encounter

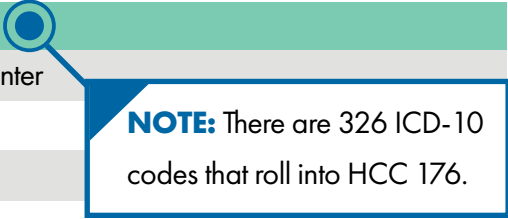
T82.898A Other specified complication of vascular prosthetic devices, implants and grafts, initial encounter

T83.511A Infection and inflammatory reaction due to indwelling urethral catheter, initial encounter

T83.89XA Other specified complication of genitourinary prosthetic devices, implants and grafts, initial encounter

T83.9XXA Unspecified complication of genitourinary prosthetic device, implant and graft, initial encounter

T84.84XA Pain due to internal orthopedic prosthetic devices, implants and grafts, initial encounter



**NOTE:** There are 326 ICD-10 codes that roll into HCC 176.

**HCC 186 Major Organ Transplant or Replacement Status • 0.832**

Z48.21	Encounter for aftercare following heart transplant
Z48.23	Encounter for aftercare following liver transplant
Z48.24	Encounter for aftercare following lung transplant
Z48.290	Encounter for aftercare following bone marrow transplant
Z94.1	Heart transplant status
Z94.2	Lung transplant status
Z94.4	Liver transplant status
Z94.81	Bone marrow transplant status
Z94.83	Pancreas transplant status
Z94.84	Stem cells transplant status
Z95.811	Presence of heart assist device

**HCC 188 Artificial Openings for Feeding or Elimination • 0.534**

K94.23	Gastrostomy malfunction
Z43.1	Encounter for attention to gastrostomy
Z43.2	Encounter for attention to ileostomy
Z43.3	Encounter for attention to colostomy
Z43.4	Encounter for attention to other artificial openings of digestive tract
Z43.5	Encounter for attention to cystostomy
Z43.6	Encounter for attention to other artificial openings of urinary tract
Z93.1	Gastrostomy status
Z93.2	Ileostomy status
Z93.3	Colostomy status

## HCC 189 Amputation Status, Lower Limb/Amputation Complications • 0.519

G54.6	Phantom limb syndrome with pain
Z89.421	Acquired absence of other right toe(s)
Z89.422	Acquired absence of other left toe(s)
Z89.511	Acquired absence of right leg below knee
Z89.512	Acquired absence of left leg below knee
Z89.611	Acquired absence of right leg above knee
Z89.612	Acquired absence of left leg above knee

**NOTE:** There are 27 ICD-10 "Z" status codes that roll into HCC 189.

# Tips for Educating Providers

Encourage, Remind, Caution and Educate

**ENCOURAGE** your providers to:



Keep problem lists up to date and accurate.



Document each patient encounter as if it is the *only* encounter.

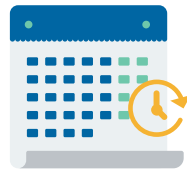


Select the most *specific* ICD-10 supported by their documentation.



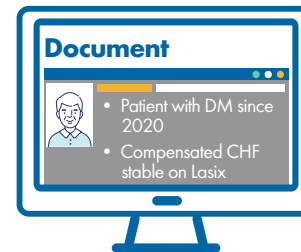
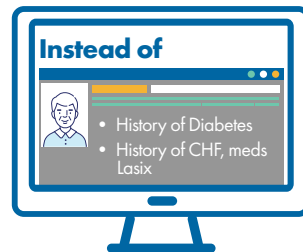
Review and document conditions managed by a *specialist*.

**REMINDE** your providers that:



All *chronic conditions* need to be documented at least once annually.

**CAUTION** your providers *against*:



Avoid using the terms “**history of**” or “**past history**” in the progress note for a condition that is chronic, but currently stable.

## Tell your patient’s story:

The only visibility insurers have to the care you provide and the conditions you manage is through **coding**.

**EDUCATE** your providers on:

A common acronym utilized by coders to identify documentation that supports coding accuracy: M-E-A-T (Monitor, Evaluate, Assess/Address and Treat.) Including one or more of the M-E-A-T details in face-to-face visit documentation puts providers on the path to success in capturing risk! (see page 42)

# M-E-A-T

A common acronym utilized by coders to identify documentation that supports coding accuracy is M-E-A-T, which stands for Monitor, Evaluate, Assess or Address and Treat. Including **one or more** of the M-E-A-T details at a face-to-face or telehealth visit for each condition that requires or affects patient care treatment or management will put you on the path to success in capturing risk!

## M

### monitor

signs, symptoms, ordering or reviewing and referencing of tests/labs, disease progression or disease regression.



## E

### evaluate

test results, medication effectiveness, physical exam findings and response to treatment.



## A

### assess or address

by discussion, acknowledging, reviewing records, documenting status/level conditions and counseling.



## T

### treat

with prescribing/continuation of medications, referral to specialist for treatment/consultation, surgical/other therapeutic interventions and plan for management of condition(s).



### Comprehensive Documentation Examples

CONGESTIVE HEART FAILURE (CHF)-STABLE. CONTINUE SAME DOSE OF BISOPROLOL, LISINAPRIL, AND LASIX.

MAJOR DEPRESSIVE DISORDER (MDD)-CONTINUED FEELING OF HOPELESSNESS. WILL INCREASE PAXIL TO 50 MG/DAY.

ATRIAL FIBRILLATION (A.FIB)-PATIENT ON COUMADIN. INR MANAGED BY DR. JONES.

UPPER RESPIRATORY TRACT INFECTION (URI)-LIKELY VIRAL. DISCUSSED SYMPTOMATIC TREATMENT OPTIONS. RECOMMENDED SUGAR-FREE COUGH SYRUP DUE TO T2DM.

NEBRASKA  
HEALTH  
NETWORK



# TIPS

- Document each patient encounter as if it is the only encounter of the year.
- All chronic and complex conditions should be reviewed and documented annually.
- Review and document conditions managed by a specialist.
- Avoid using only acronyms in your documentation. Instead, spell out the full health condition to assist with proper coding of diagnosis codes.
- Review and update the patient's active problem list at each visit.
- Avoid documenting and using the phrases "past medical history" or "history of" in the progress note for a condition that is chronic but **currently stable**. Example: "Congestive Heart Failure, stable. Will continue same dose of Lasix and ACE inhibitor."

# HCC54 Extender

## HCC 54 Substance Abuse with Psychotic Complications • .329

F10.131	Alcohol abuse with withdrawal delirium
F10.132	Alcohol abuse with withdrawal with perceptual disturbance
F10.150	Alcohol abuse with alcohol-induced psychotic disorder with delusions
F10.151	Alcohol abuse with alcohol-induced psychotic disorder with hallucinations
F10.159	Alcohol abuse with alcohol-induced psychotic disorder, unspecified
F10.231	Alcohol dependence with withdrawal delirium
F10.232	Alcohol dependence with withdrawal with perceptual disturbance
F10.250	Alcohol dependence with alcohol-induced psychotic disorder with delusions
F10.251	Alcohol dependence with alcohol-induced psychotic disorder with hallucinations
F10.259	Alcohol dependence with alcohol-induced psychotic disorder, unspecified
F10.26	Alcohol dependence with alcohol-induced persisting amnestic disorder
F10.27	Alcohol dependence with alcohol-induced persisting dementia
F10.931	Alcohol use, unspecified with withdrawal delirium
F10.932	Alcohol use, unspecified with withdrawal with perceptual disturbance
F10.950	Alcohol use, unspecified with alcohol-induced psychotic disorder with delusions
F10.951	Alcohol use, unspecified with alcohol-induced psychotic disorder with hallucinations
F10.959	Alcohol use, unspecified with alcohol-induced psychotic disorder, unspecified
F10.96	Alcohol use, unspecified with alcohol-induced persisting amnestic disorder
F10.97	Alcohol use, unspecified with alcohol-induced persisting dementia
F11.150	Opioid abuse with opioid-induced psychotic disorder with delusions
F11.151	Opioid abuse with opioid-induced psychotic disorder with hallucinations
F11.159	Opioid abuse with opioid-induced psychotic disorder, unspecified
F11.250	Opioid dependence with opioid-induced psychotic disorder with delusions
F11.251	Opioid dependence with opioid-induced psychotic disorder with hallucinations
F11.259	Opioid dependence with opioid-induced psychotic disorder, unspecified
F11.950	Opioid use, unspecified with opioid-induced psychotic disorder with delusions
F11.951	Opioid use, unspecified with opioid-induced psychotic disorder with hallucinations
F11.959	Opioid use, unspecified with opioid-induced psychotic disorder, unspecified
F12.150	Cannabis abuse with psychotic disorder with delusions



**HCC 54 Substance Abuse with Psychotic Complications • .329**

F12.151	Cannabis abuse with psychotic disorder with hallucinations
F12.159	Cannabis abuse with psychotic disorder, unspecified
F12.250	Cannabis dependence with psychotic disorder with delusions
F12.251	Cannabis dependence with psychotic disorder with hallucinations
F12.259	Cannabis dependence with psychotic disorder, unspecified
F12.950	Cannabis use, unspecified with psychotic disorder with delusions
F12.951	Cannabis use, unspecified with psychotic disorder with hallucinations
F12.959	Cannabis use, unspecified with psychotic disorder, unspecified
F13.150	Sedative, hypnotic or anxiolytic abuse with sedative, hypnotic or anxiolytic-induced psychotic disorder with delusions
F13.151	Sedative, hypnotic or anxiolytic abuse with sedative, hypnotic or anxiolytic-induced psychotic disorder with hallucinations
F13.131	Sedative, hypnotic or anxiolytic abuse with withdrawal delirium
F13.132	Sedative, hypnotic or anxiolytic abuse with withdrawal with perceptual disturbance
F13.159	Sedative, hypnotic or anxiolytic abuse with sedative, hypnotic or anxiolytic-induced psychotic disorder, unspecified
F13.231	Sedative, hypnotic or anxiolytic dependence with withdrawal delirium
F13.232	Sedative, hypnotic or anxiolytic dependence with withdrawal with perceptual disturbance
F13.250	Sedative, hypnotic or anxiolytic dependence with sedative, hypnotic or anxiolytic-induced psychotic disorder with delusions
F13.251	Sedative, hypnotic or anxiolytic dependence with sedative, hypnotic or anxiolytic-induced psychotic disorder with hallucinations
F13.259	Sedative, hypnotic or anxiolytic dependence with sedative, hypnotic or anxiolytic-induced psychotic disorder, unspecified
F13.26	Sedative, hypnotic or anxiolytic dependence with sedative, hypnotic or anxiolytic-induced persisting amnesic disorder
F13.27	Sedative, hypnotic or anxiolytic dependence with sedative, hypnotic or anxiolytic-induced persisting dementia
F13.931	Sedative, hypnotic or anxiolytic use, unspecified with withdrawal delirium
F13.932	Sedative, hypnotic or anxiolytic use, unspecified with withdrawal with perceptual disturbances
F13.950	Sedative, hypnotic or anxiolytic use, unspecified with sedative, hypnotic or anxiolytic-induced psychotic disorder with delusions
F13.951	Sedative, hypnotic or anxiolytic use, unspecified with sedative, hypnotic or anxiolytic-induced psychotic disorder with hallucinations
F13.959	Sedative, hypnotic or anxiolytic use, unspecified with sedative, hypnotic or anxiolytic-induced psychotic disorder, unspecified
F13.96	Sedative, hypnotic or anxiolytic use, unspecified with sedative, hypnotic or anxiolytic-induced persisting amnesic disorder
F13.97	Sedative, hypnotic or anxiolytic use, unspecified with sedative, hypnotic or anxiolytic-induced persisting dementia
F14.150	Cocaine abuse with cocaine-induced psychotic disorder with delusions
F14.151	Cocaine abuse with cocaine-induced psychotic disorder with hallucinations

**HCC 54 Substance Abuse with Psychotic Complications • .329**

F14.159	Cocaine abuse with cocaine-induced psychotic disorder, unspecified
F14.250	Cocaine dependence with cocaine-induced psychotic disorder with delusions
F14.251	Cocaine dependence with cocaine-induced psychotic disorder with hallucinations
F14.259	Cocaine dependence with cocaine-induced psychotic disorder, unspecified
F14.950	Cocaine use, unspecified with cocaine-induced psychotic disorder with delusions
F14.951	Cocaine use, unspecified with cocaine-induced psychotic disorder with hallucinations
F14.959	Cocaine use, unspecified with cocaine-induced psychotic disorder, unspecified
F15.150	Other stimulant abuse with stimulant-induced psychotic disorder with delusions
F15.151	Other stimulant abuse with stimulant-induced psychotic disorder with hallucinations
F15.159	Other stimulant abuse with stimulant-induced psychotic disorder, unspecified
F15.250	Other stimulant dependence with stimulant-induced psychotic disorder with delusions
F15.251	Other stimulant dependence with stimulant-induced psychotic disorder with hallucinations
F15.259	Other stimulant dependence with stimulant-induced psychotic disorder, unspecified
F15.950	Other stimulant use, unspecified with stimulant-induced psychotic disorder with delusions
F15.951	Other stimulant use, unspecified with stimulant-induced psychotic disorder with hallucinations
F15.959	Other stimulant use, unspecified with stimulant-induced psychotic disorder, unspecified
F16.150	Hallucinogen abuse with hallucinogen-induced psychotic disorder with delusions
F16.151	Hallucinogen abuse with hallucinogen-induced psychotic disorder with hallucinations
F16.159	Hallucinogen abuse with hallucinogen-induced psychotic disorder, unspecified
F16.250	Hallucinogen dependence with hallucinogen-induced psychotic disorder with delusions
F16.251	Hallucinogen dependence with hallucinogen-induced psychotic disorder with hallucinations
F16.259	Hallucinogen dependence with hallucinogen-induced psychotic disorder, unspecified
F16.950	Hallucinogen use, unspecified with hallucinogen-induced psychotic disorder with delusions
F16.951	Hallucinogen use, unspecified with hallucinogen-induced psychotic disorder with hallucinations
F16.959	Hallucinogen use, unspecified with hallucinogen-induced psychotic disorder, unspecified
F18.150	Inhalant abuse with inhalant-induced psychotic disorder with delusions
F18.151	Inhalant abuse with inhalant-induced psychotic disorder with hallucinations
F18.159	Inhalant abuse with inhalant-induced psychotic disorder, unspecified
F18.17	Inhalant abuse with inhalant-induced dementia

## HCC 54 Substance Abuse with Psychotic Complications • .329

F18.250	Inhalant dependence with inhalant-induced psychotic disorder with delusions
F18.251	Inhalant dependence with inhalant-induced psychotic disorder with hallucinations
F18.259	Inhalant dependence with inhalant-induced psychotic disorder, unspecified
F18.27	Inhalant dependence with inhalant-induced dementia
F18.950	Inhalant use, unspecified with inhalant-induced psychotic disorder with delusions
F18.951	Inhalant use, unspecified with inhalant-induced psychotic disorder with hallucinations
F18.959	Inhalant use, unspecified with inhalant-induced psychotic disorder, unspecified
F18.97	Inhalant use, unspecified with inhalant-induced persisting dementia
F19.150	Other psychoactive substance abuse with psychoactive substance-induced psychotic disorder with delusions
F19.151	Other psychoactive substance abuse with psychoactive substance-induced psychotic disorder with hallucinations
F19.159	Other psychoactive substance abuse with psychoactive substance-induced psychotic disorder, unspecified
F19.16	Other psychoactive substance abuse with psychoactive substance-induced persisting amnestic disorder
F19.17	Other psychoactive substance abuse with psychoactive substance-induced persisting dementia
F19.231	Other psychoactive substance dependence with withdrawal delirium
F19.232	Other psychoactive substance dependence with withdrawal with perceptual disturbance
F19.250	Other psychoactive substance dependence with psychoactive substance-induced psychotic disorder with delusions
F19.251	Other psychoactive substance dependence with psychoactive substance-induced psychotic disorder with hallucinations
F19.259	Other psychoactive substance dependence with psychoactive substance-induced psychotic disorder, unspecified
F19.26	Other psychoactive substance dependence with psychoactive substance-induced persisting amnestic disorder
F19.27	Other psychoactive substance dependence with psychoactive substance-induced persisting dementia
F19.931	Other psychoactive substance use, unspecified with withdrawal delirium
F19.932	Other psychoactive substance use, unspecified with withdrawal with perceptual disturbance
F19.950	Other psychoactive substance use, unspecified with psychoactive substance-induced psychotic disorder with delusions
F19.951	Other psychoactive substance use, unspecified with psychoactive substance-induced psychotic disorder with hallucinations
F19.959	Other psychoactive substance use, unspecified with psychoactive substance-induced psychotic disorder, unspecified
F19.96	Other psychoactive substance use, unspecified with psychoactive substance-induced persisting amnestic disorder
F19.97	Other psychoactive substance use, unspecified with psychoactive substance-induced persisting dementia

# CMS-HCC/ICD-10

## Coder Reference Guide 2021

*This resource guide is based on the HCCs most frequently used within the Nebraska Health Network.  
It is not intended to be a comprehensive list of all HCCs/ICD-10s.*

### **Learn More about Medical Risk Adjustment**

- ▶ Watch our education module and earn CME credits at [NebraskaHealthNetwork.com/resources](https://NebraskaHealthNetwork.com/resources)
- ▶ Want to learn more? Contact us at: [nhn@nebraskahealthnetwork.com](mailto:nhn@nebraskahealthnetwork.com)

NEBRASKA  
HEALTH  
NETWORK

